

WELCOME TO



We invite you to share in our Pride...

FEATURES:

- Spacious 1-2-3 Bedroom Floor Plans
- 1 and 2 Baths
- Individual Central Heating and Air Conditioning
- Heat Paid
- Elevators
- Controlled Access Entry
- Many Walk-In Closets
- Vertical/Mini Blinds Furnished
- Ceiling Fans
- Mirrored Closet Doors
- Built-In Microwave/Venthood
- Dishwasher & Disposal
- Electric Range
- Frost Free Refrigerator
- Plush Earth-Tone Carpet
- Balcony or Deck
- European Style Cabinets

AMENITIES:

- Heated Indoor Pool
- Heated Outdoor Pool
- Sauna/Whirlpool
- Exercise Room
- Tanning Beds
- Community Room

AVAILABLE FEATURES:

- Full Size Washer & Dryer in Many Apartments
- Vaulted Ceilings in Some Units
- Garages with Automatic Door Openers Available
- Cable TV Available

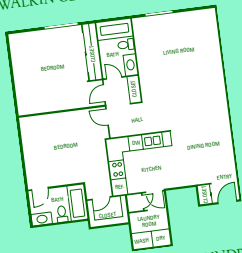
605-232-1000



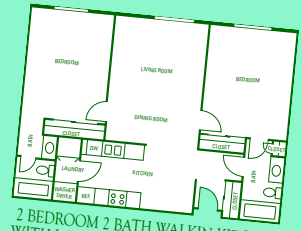
1 BEDROOM 1 BATH WALK THRU KITCHEN
723 SQFT @



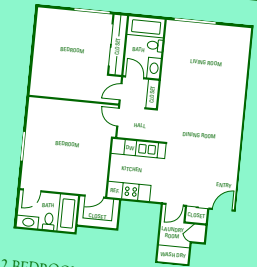
2 BEDROOM 1-1/4 BATH WALK THRU KITCHEN
WALK IN CLOSET 957 SQFT @



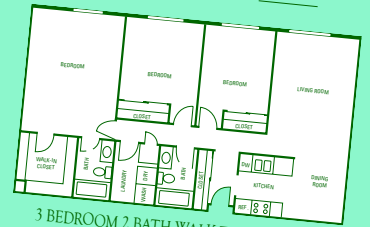
2 BEDROOM 2 BATH WITH LAUNDRY
L KITCHEN 1035 SQFT @



2 BEDROOM 2 BATH WALK IN KITCHEN
WITH LAUNDRY 1045 SQFT @



2 BEDROOM 2 BATH WITH LAUNDRY
WALK IN KITCHEN 1035 SQFT @



3 BEDROOM 2 BATH WALK THRU KITCHEN,
LAUNDRY & MASTER SUITE
1340 SQFT @