

# WELCOME TO CARRINGTON COURT

*We invite you to share in our Pride...*

## APARTMENT FEATURES

- SPACIOUS 1-2-3 BEDROOM FLOOR PLANS
- 1 AND 2 BATHS
- INDIVIDUAL CENTRAL HEATING AND AIR CONDITIONING
- HEAT PAID
- ELEVATORS
- CONTROLLED ACCESS ENTRY
- MANY WALK-IN CLOSETS
- VERTICALS/MINI-BLINDS FURNISHED
- CEILING FANS
- MIRRORED CLOSET DOORS
- MICROWAVE
- DISHWASHER & DISPOSAL
- ELECTRIC RANGE
- FROST-FREE REFRIGERATOR
- PLUSH EARTH-TONE CARPET
- BALCONY OR DECK
- EUROPEAN STYLE CABINETS

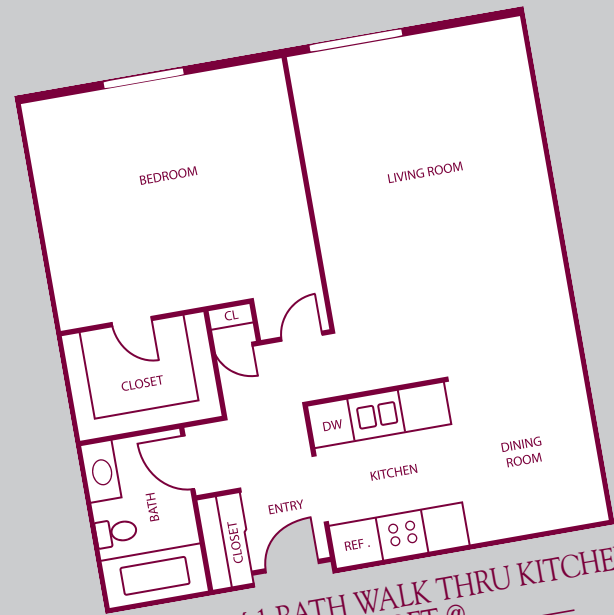
## PROJECT AMENITIES

- HEATED INDOOR POOL
- HEATED OUTDOOR POOL
- SAUNA/JACUZZI
- EXERCISE ROOM
- TANNING BEDS
- TENNIS COURTS
- COMMUNITY ROOM
- ON-SITE PICNIC AND PLAYGROUND AREA

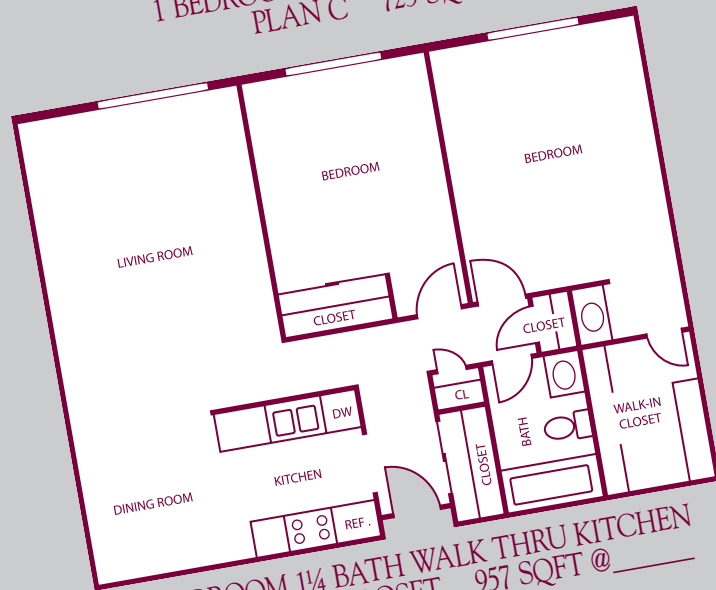
## AVAILABLE FEATURES

- FULL SIZE WASHER AND DRYER IN MOST APARTMENTS
- SOME UNITS WITH VAULTED CEILINGS
- GARAGES WITH AUTOMATIC DOOR OPENERS AVAILABLE
- CABLE TV AVAILABLE

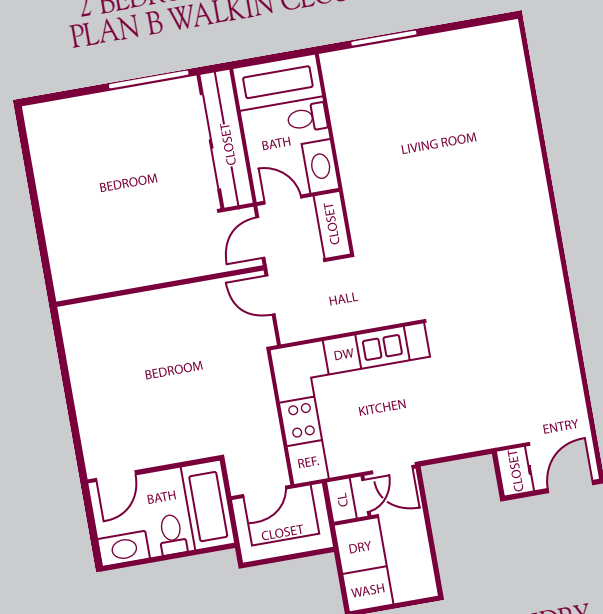
**952-953-0700**



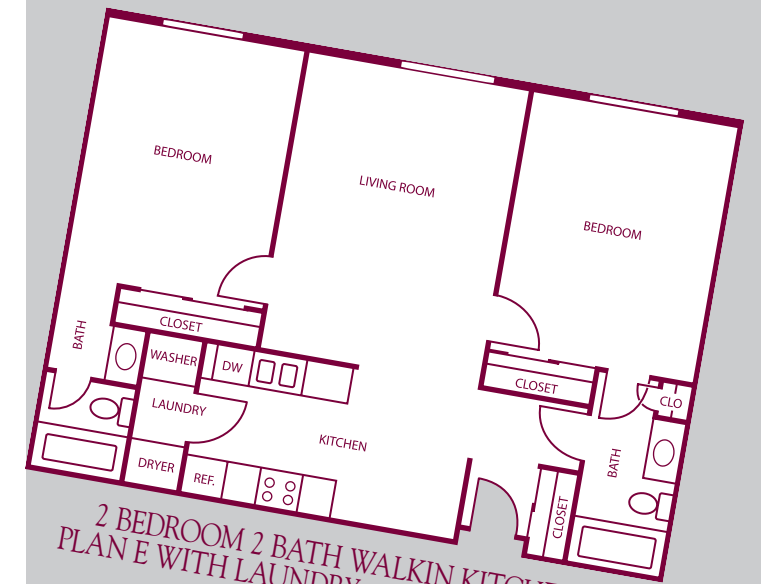
1 BEDROOM 1 BATH WALK THRU KITCHEN  
PLAN C 723 SQFT @ \_\_\_\_\_



2 BEDROOM 1 1/4 BATH WALK THRU KITCHEN  
PLAN B WALKIN CLOSET 957 SQFT @ \_\_\_\_\_



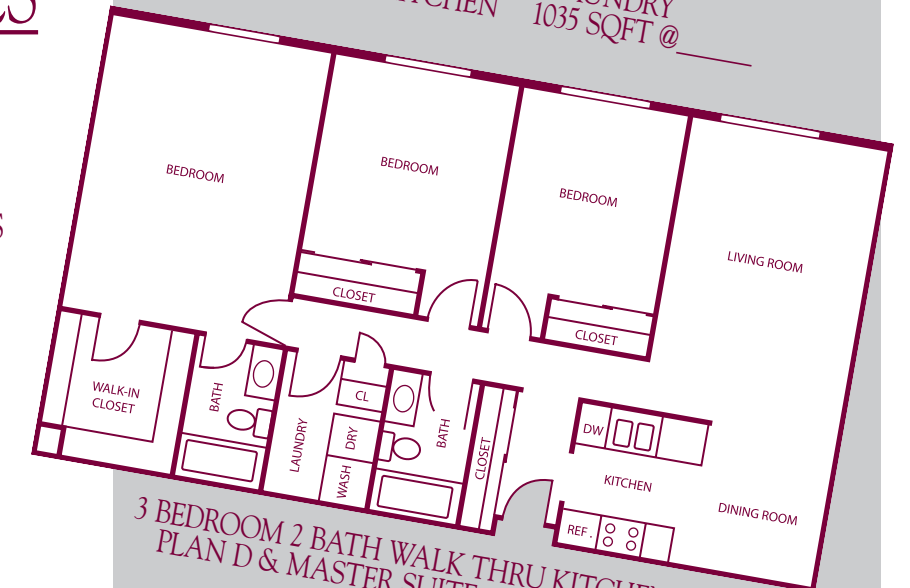
2 BEDROOM 2 BATH WITH LAUNDRY  
PLAN A L KITCHEN 1035 SQFT @ \_\_\_\_\_



2 BEDROOM 2 BATH WALKIN KITCHEN  
PLAN E WITH LAUNDRY 1045 SQFT @ \_\_\_\_\_



2 BEDROOM 2 BATH WITH LAUNDRY  
PLAN AA WALKIN KITCHEN 1035 SQFT @ \_\_\_\_\_



3 BEDROOM 2 BATH WALK THRU KITCHEN, LAUNDRY  
PLAN D & MASTER SUITE 1340 SQFT @ \_\_\_\_\_