

# WELCOME TO CAMBRIDGE COURT

*We invite you to share in our Pride...*

## FEATURES:

- Spacious 1-2-3 Bedroom Floor Plans
- 1 and 2 Baths
- Individual Central Heating and Air Conditioning
- Elevators
- Controlled Access Entry
- Many Walk-In Closets
- Vertical/Mini Blinds Furnished
- Ceiling Fans
- Mirrored Closet Doors
- Microwave
- Dishwasher & Disposal
- Electric Range
- Frost Free Refrigerator
- Plush Earth-Tone Carpet
- Balcony or Deck
- European Style Cabinets

## AMENITIES:

- Heated Indoor Pool
- Heated Outdoor Pool
- Sauna/Jacuzzi
- Exercise Room
- Tanning Beds
- Community Room
- On-site Picnic and Playground Area

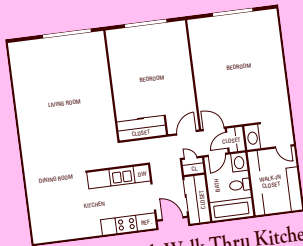
## AVAILABLE FEATURES:

- Full Size Washer & Dryer in Many Apartments
- Some Units with Vaulted Ceilings
- Garages with Automatic Door Openers Available
- Cable TV Available

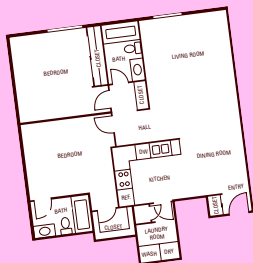
**515-225-8600**



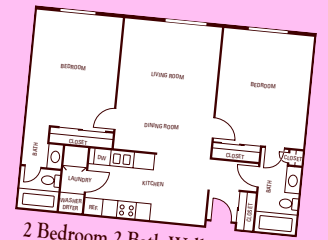
1 Bedroom 1 Bath Walk Thru Kitchen  
Plan C 723 SQFT @ \_\_\_\_\_



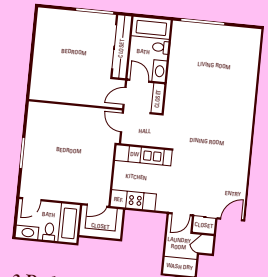
2 Bedroom 1-1/4 Bath Walk Thru Kitchen  
Plan B Walkin Closet 957 SQFT @ \_\_\_\_\_



2 Bedroom 2 Bath with Laundry  
Plan A L Kitchen 1035 SQFT @ \_\_\_\_\_



2 Bedroom 2 Bath Walkin Kitchen  
Plan E With Laundry 1045 SQFT @ \_\_\_\_\_



2 Bedroom 2 Bath with Laundry  
Plan AA Walkin Kitchen 1035 SQFT @ \_\_\_\_\_



3 Bedroom 2 Bath Walk Thru Kitchen, Laundry  
Plan D & Master Suite 1340 SQFT @ \_\_\_\_\_